



Concrete Boom Pumps

DCP38X-5ZR



About Antec

Antec is an Australian owned and operated manufacturing and distribution company focused on delivering high quality products to contractors, installers, and asset owners. Antec creates opportunities for customers to use innovative products in their businesses to add value and maximize the ease of which they operate. By providing an extensive range of superior quality product to the construction, fire protection, manufacturing, industrial and mining industries, Antec continues to be the partner of choice for both customers and suppliers.

Celebrating 35 years of operation in 2022, our team of over 100 staff located across our continually expanding network of 12 branches strive to provide superior solutions and service for your projects.

Antec: "All things to all contractors"



Our Concrete Division is a leading supplier of concrete and grout mixing, pumping and placing equipment in Australia. Our philosophy is built on industry leading customer service, after-sales support and building long term partnerships.

Our core capabilities include:

- Customized mixing and placement equipment
- Extensive range of spare parts and accessories
- On going technical support
- Refurbishment, maintenance, and service

Our industry leading brands include:



DY INNOVATE was established in 1992 as a specialized manufacturer of Industrial machinery that manufacture high quality concrete boom pumps to meet the needs of todays construction companies.

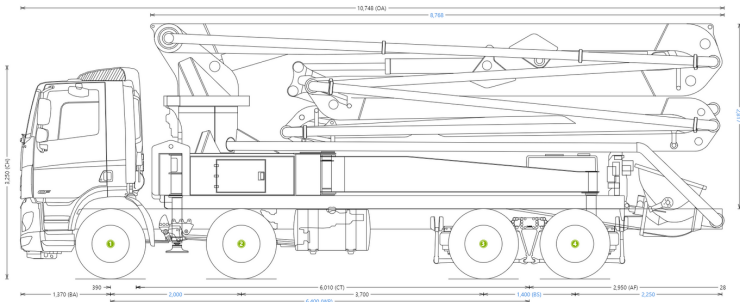
With head-quarters based in Korea, DY INNOVATE have partnered with Antec in Australia to deliver reliable, hard-working concrete pumps that delivery superior performance at competitive pricing.

Why Choose DY:

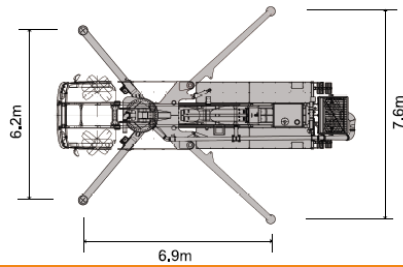
- 360° continuous rotating z-type booms
- Closed loop hydraulic system
- Extremely stable booms
- Uncomplicated designs with user-friendly maintenance
- Simple manual override features
- Replacement parts available from Antec branches



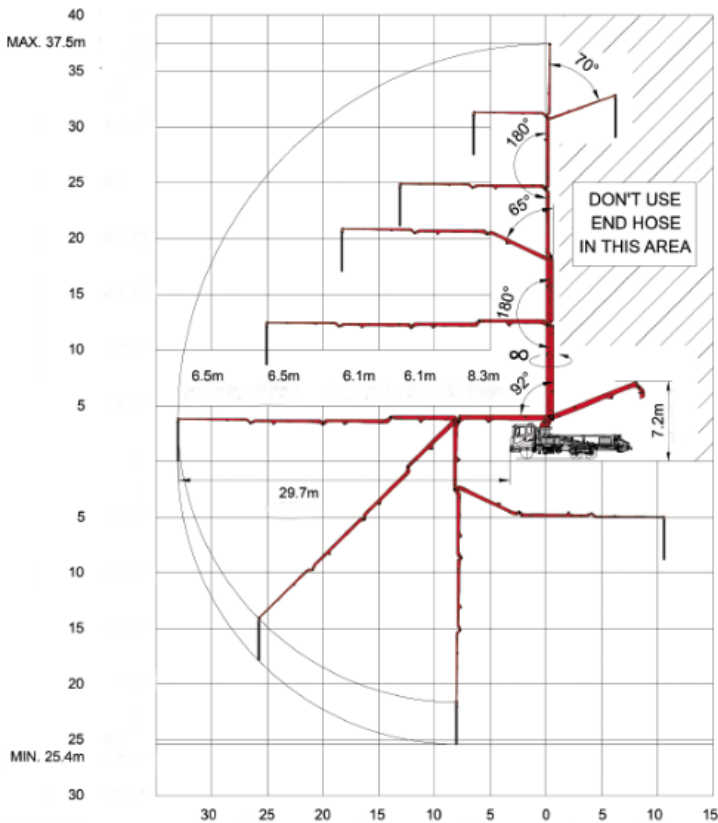
DIMENSIONS



OUTRIGGERS



WORKING RANGE



BOOM TYPE : ZR-5 SECTION



5th section articulation
DCP38X-5ZR



Truck-Mounted Specifications

DCP38X-5ZR	
Length	11.180 m
Width	2.495 m
Height	3.865 m
Wheelbase	5.750 m
Front axle weight	6,350 kg
Rear axle weight	19,750 kg
Approx. total weight	26,100 kg

Boom Specifications Roll-and-Z-Fold Design

DCP38X-5ZR	
Height and Reach	
Vertical Reach	37.5 m
Horizontal Reach	33.5 m
Reach from front of truck	29.7 m
Reach Depth	25.4 m
Unfolding Height	7.2 m

Boom Section

1 st section articulation	92°
2 nd section articulation	180°
3 rd section articulation	245°
4 th section articulation	180°
5 th section articulation	250°
1 st section length	8.3 m
2 nd section length	6.1 m
3 rd section length	6.1 m
4 th section length	6.5 m
5 th section length	6.5 m

General Specs

Pipeline size	125 mm
Rotation	∞
End hose – Length	3.5 m
End hose – diameter	125 mm
Outrigger spread L – R	6.2 m
Swing out, telescope & extend down	
Outrigger spread	7.6 m
Swing out & extend down	

Pump Specifications

Output	Rod side	160m ³ /hr
	Piston side	108m ³ /hr
Pressure	Rod side	87 bar
	Piston side	130 bar
Material Cylinder diameter	230 mm	
Stroke length	2,100 mm	
Max strokes	Per minute	1 minute
	Rod side	31
	Piston side	21
Volume control	Zero to full	
Vibrator Standard	Option	
Hard-chromed material cylinders	Standard	
Hydraulic system	Closed-loop	
Hydraulic system pressure	350 bar	
Differential cylinder diameter	140 mm	
Rod Diameter	80 mm	
Maximum size aggregate	60 mm	



Contact & Locations

Head Office / Refractory Division

9 Chicago Ave
BLACKTOWN
NSW 2148

02 9622 9622

salesnsw@antec.com.au

Concrete Equipment Division

33 Chicago Ave
BLACKTOWN
NSW 2148

02 9622 9622

concrete@antec.com.au



NSW, Blacktown

1 Butterfield St
BLACKTOWN
NSW 2148

02 9622 9622

salesnsw@antec.com.au

NSW, Penrith

6/16-24 Borec Rd
PENRITH
NSW 2750

02 9622 9622

salesnsw@antec.com.au

VIC, Port Melbourne

2/344 Lorimer St
PORT MELBOURNE
VIC 3207

03 8645 3222

salesvic@antec.com.au

VIC, Hallam

2/37-41 Hallam South Rd
HALLAM

VIC 3803

03 8645 3222

VIC, Thornbury

345 Darebin Rd
THORNBURY
VIC 3071

03 8645 3222

salesvic@antec.com.au

QLD, Eagle Farm

7-8/783 Kingsford Smith Dr
EAGLE FARM

QLD 4009

07 3420 4099

salesqld@antec.com.au

FNQLD, Townsville

344 Bayswater Rd
GARBUTT

QLD 4814

07 3420 4099

salesqld@antec.com.au

QLD, Salisbury

106 Blomfield St
SALISBURY

QLD 4107

07 3420 4099

salesqld@antec.com.au

QLD, Gold Coast

10 Trade Court
Molendinar

QLD 4214

07 3420 4099

salesqld@antec.com.au

SA, Beverley

6 Myer Court
BEVERLEY

SA 5009

08 8244 8748

saessa@antec.com.au

NT, Berrimah

8 Willes Road
BERRIMAH

NT 0828

08 7919 7124

salesnt@antec.com.au

WA, Canning Vale

3 Thorn way
CANNING VALE

WA 6155

08 6350 9600

saleswa@antec.com.au

